

Portfolio

Anna Gnizdiukh



Projects



Anna Gnizdiukh
anna.gnizdiukh@gmail.com

Protohouse	6	07.2016 - now	Intern and working student at conceptsued°, Munich
At home in the city. Giesing collective living	10	09.2015 - 05.2016	Exchange year at the University of Bath, UK
Urban ghosts. Creative and adaptive re-use	14	11.2014 - 06.2015	Working student at Architekten-HBH, Munich
I am home. Osram Lio Award entry	20	10.2013 - 08.2017	B.A. Architecture at the Technical University of Munich
Cinémathèque Berlin	24		

MS Office		InDesign	
Archicad		Photoshop	
Allplan		Illustrator	
Sketchup		English	
German		Russian	
Ukrainian		French	

All content of this portfolio is created by me unless mentioned otherwise

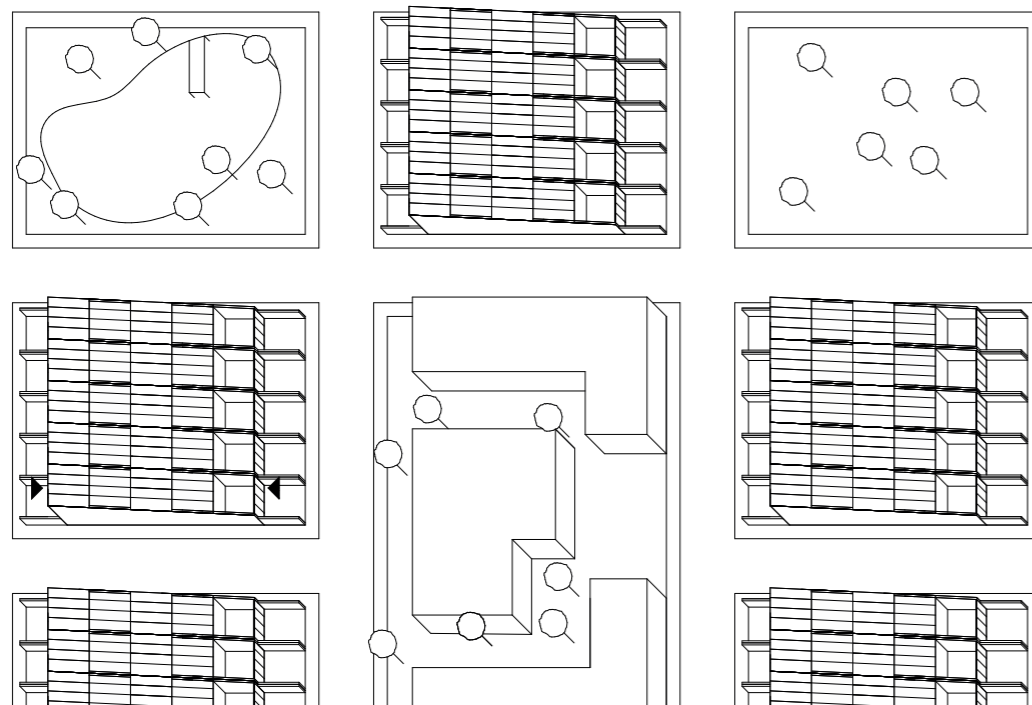
Protohouse

2013-2014

Chair of Building Construction and Material
Science, Prof. Musso
Group project (4)

Nowadays when resources are getting tighter and quality housing is getting more and more expensive, it is important to find affordable and sustainable solutions providing enough comfort and privacy in dense conditions. Protohouse is a proposal for suburban areas around Munich. It is a flexible typology to accommodate a single family or two smaller ones in a densely built settlement. The long sides are built

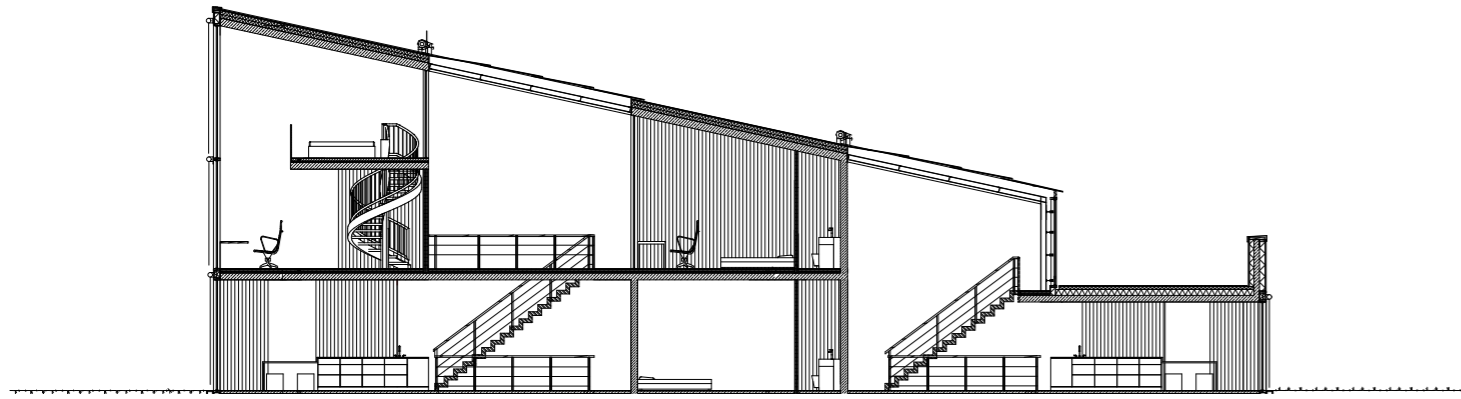
as firewalls to ensure privacy and the inner spaces can function independently from each other, or be connected into one big home. The house is naturally lit through curtain-wall facades and glazed roofs. At the same time, all private spaces cannot be seen from outside which creates an intimate atmosphere for residents while not losing in density. Important aspects of the project were construction, detail and environmental planning.



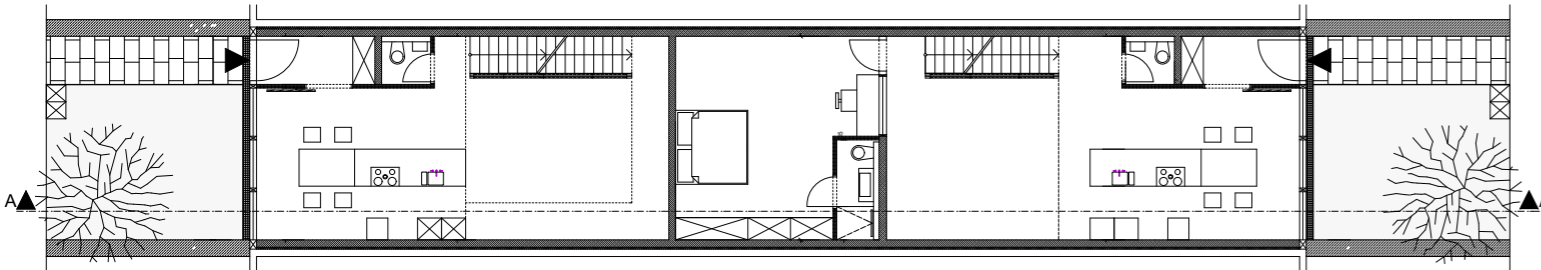
Masterplan, image: Flora Block



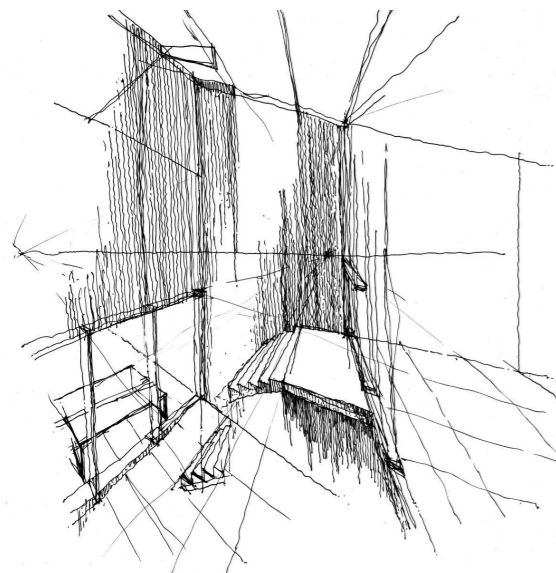
Outside perspective



Section



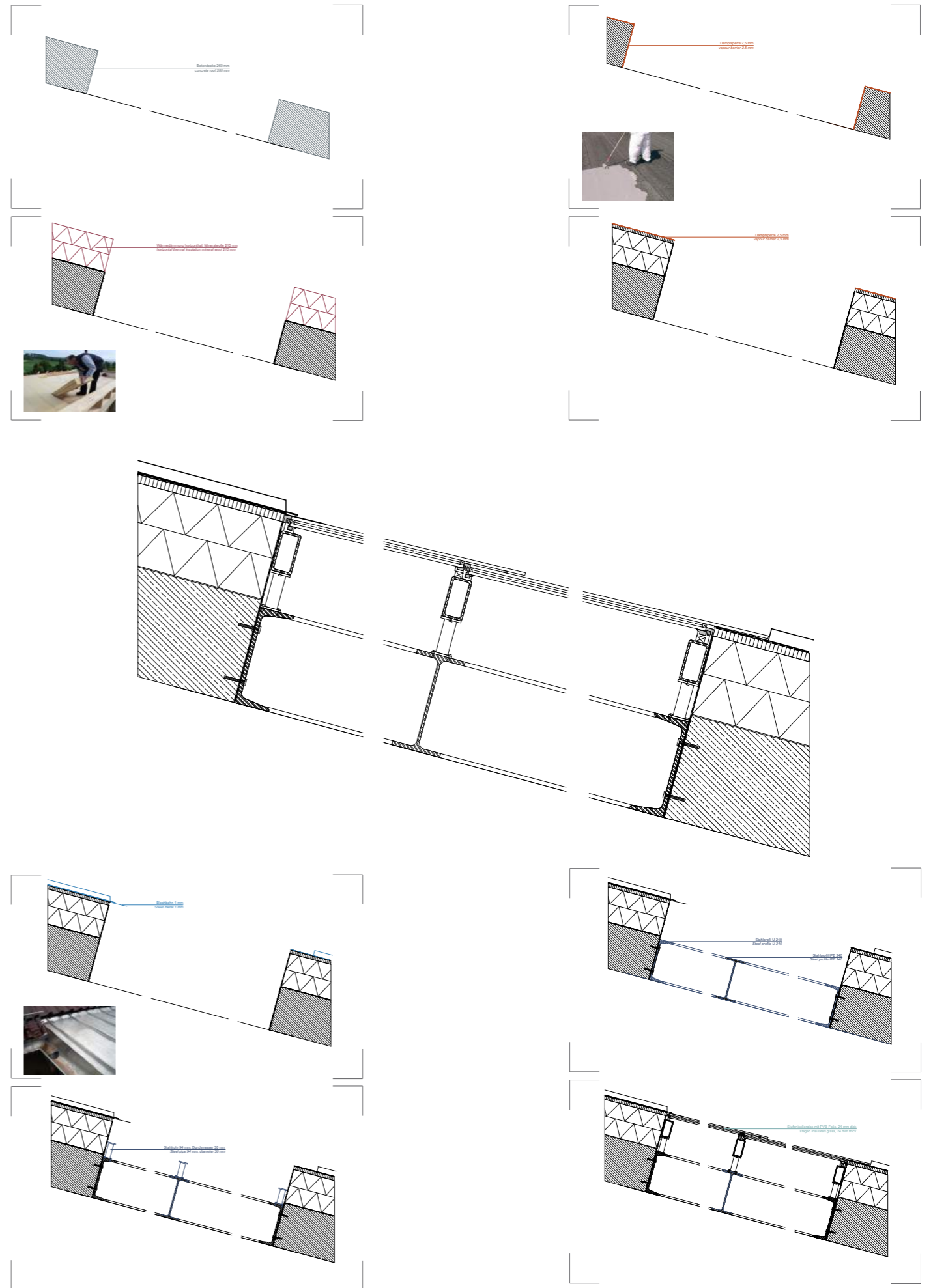
Ground floor



Concept sketch

(on the right) A 1:5 detail of the glazed roof is designed as part of the studio. The roof, which is one of the key elements in the building, presents a challenge of covering up large courtyards but allowing for air and light at the same time.

Here, outtakes from the step-by-step building process are shown. The detail was worked out for both fixed glazing and built-in window parts. This work resulted in a brochure with collected detail drawings, published under the name "A detail evolves".



At home in the city. Giesing collective living

2015

Chair for Urbanism and Housing, Prof. Krucker,
Prof. Bates
Group project (3)

A new housing block for a transforming neighborhood in Munich. The block is designed to project the idea of collective living - that is, to provide a concept for social spaces for the building residents.

It is realised with spacious open platforms on every floor, connecting the three building parts with different types of inhabitants: families, students living in shared flats and young professionals or couples living in studio apartments. The elevators and a stairwell are also reached

through the platforms to encourage interaction.

With shops and a cafe on the ground level the building connects with the immediate surrounding and becomes integrated into the lively street.

The project aims to invite and connect people of different social and cultural backgrounds. Important aspects of the studio were attention to detail of the inner spaces and the urban connection of the building with the city.



1 Site model, joint work

2 Site plan

3 Outside perspective



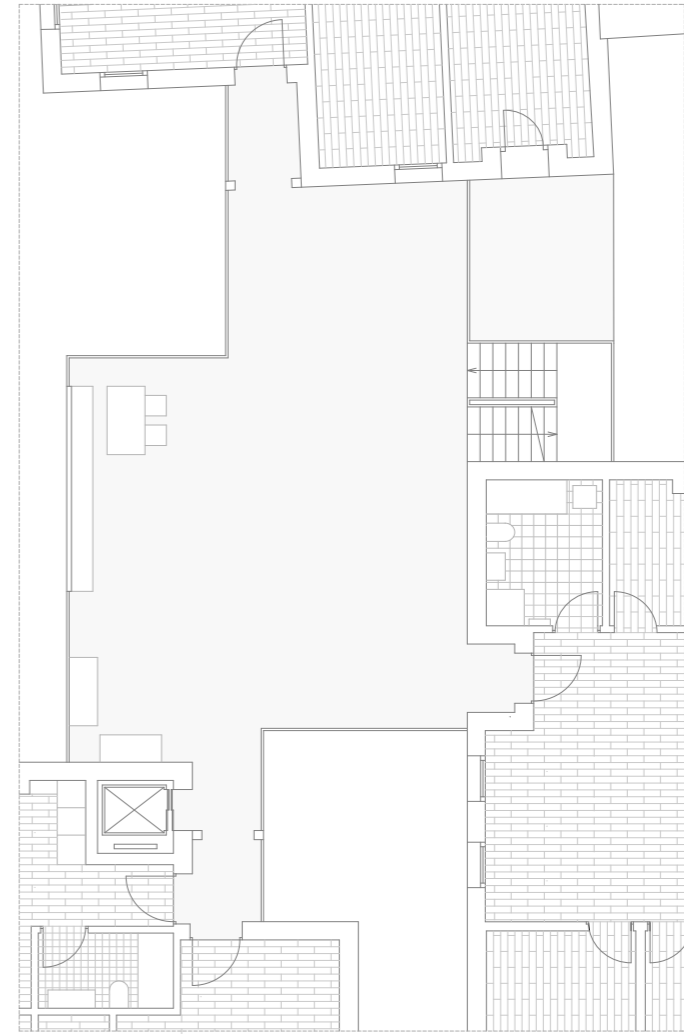


1

1,4 Model

2 Ground floor and regular floor

3 Detail students' flat



3



2

This spread: all joint work



4

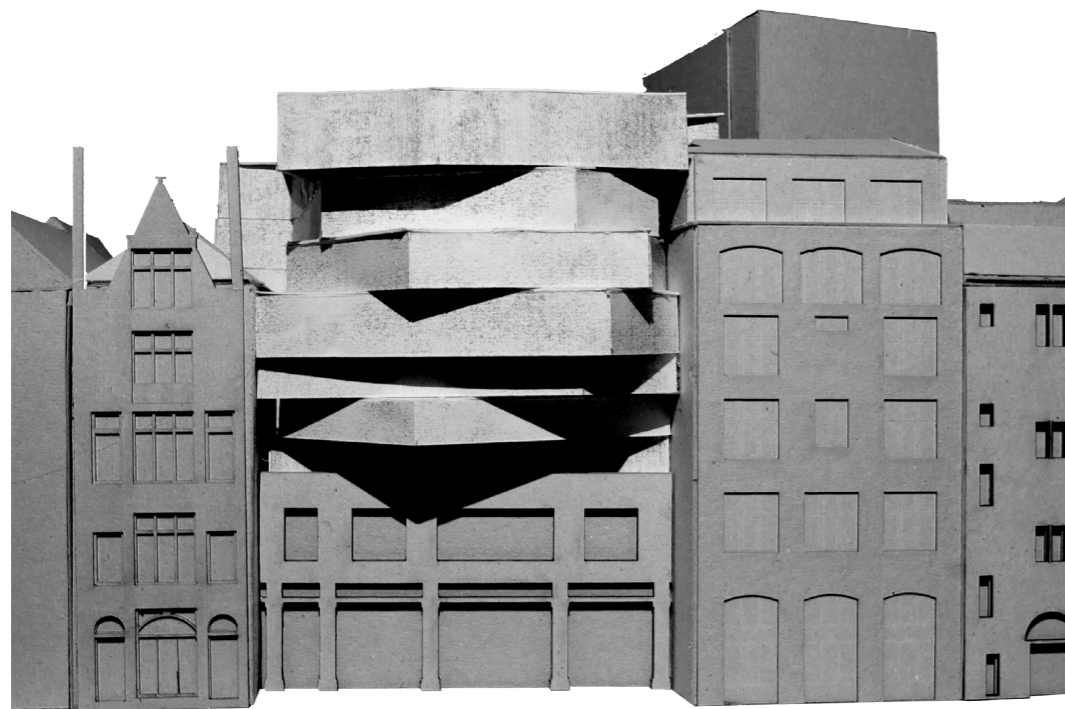
Urban ghosts. Creative and adaptive re-use

2015

3rd Year Studio, University of Bath,
United Kingdom
Group project (6)

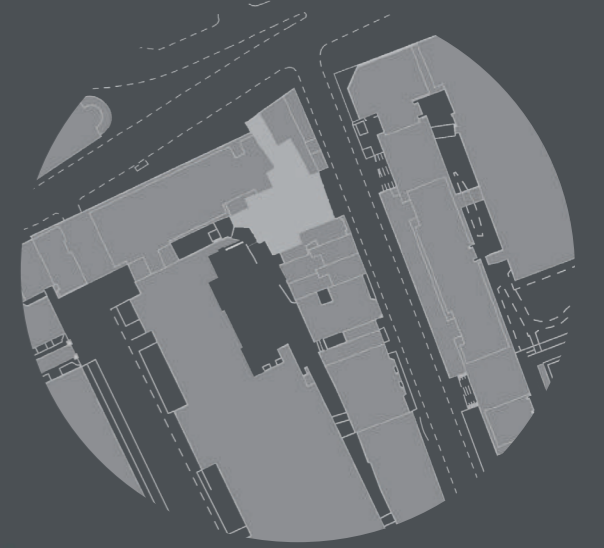
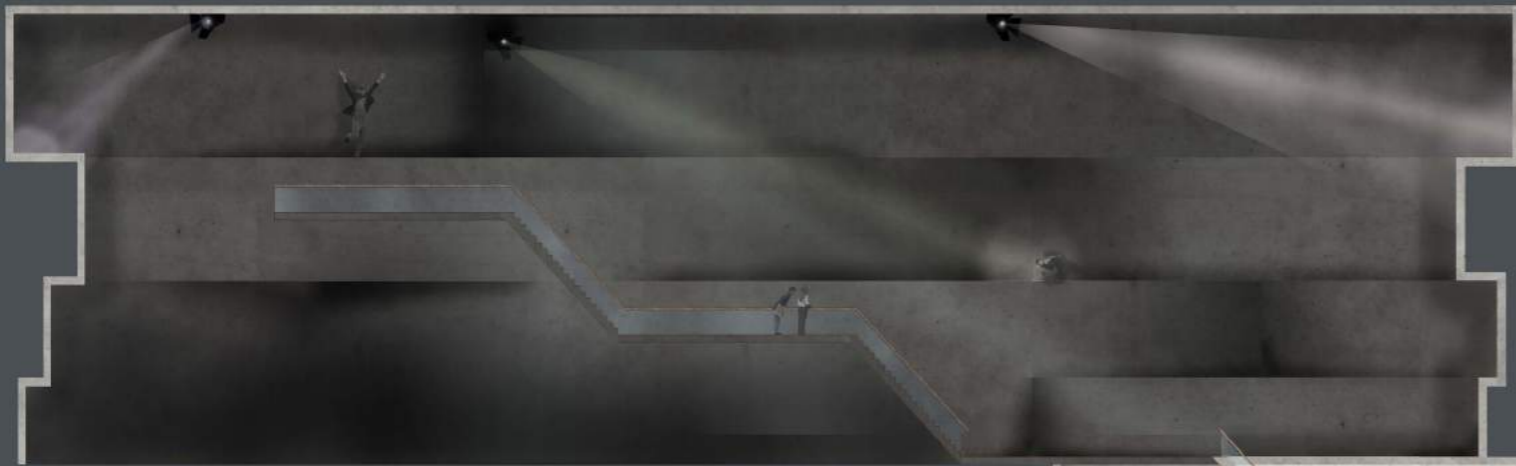
A re-use proposal in a form of an ideas competition for an abandoned tube station in London. The historic facade remains untouched, while inside, an experimental theatre is designed on different levels. Imagining a space for Theatre of Cruelty, the design features monumental, heavy brutalist forms and expressive inner spaces. It puts the spectator in the centre of the show,

thus reversing the traditional theatre concept and allowing a unique perspective for actors to explore. Different performance spaces are located in underground shafts and in upper floors. The visual brutality of approach is contrasting with careful handling of the historical inner spaces of the station.

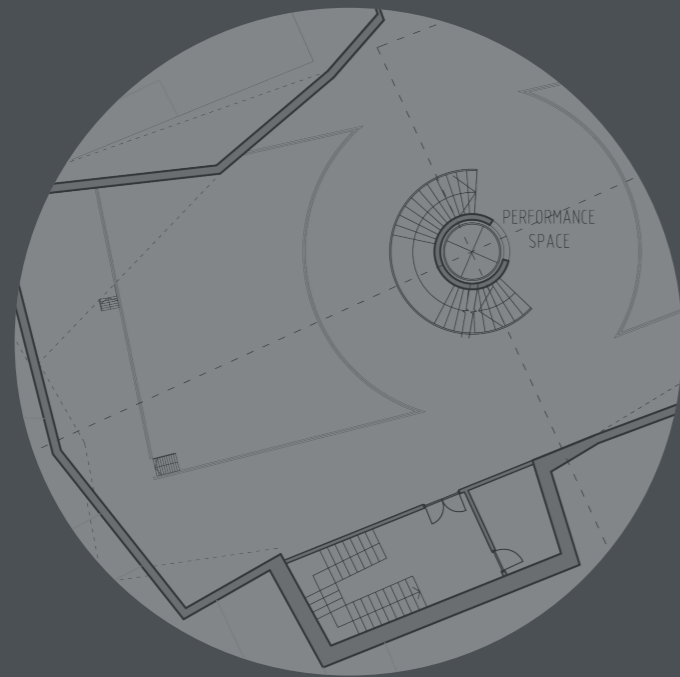


This spread: all joint work

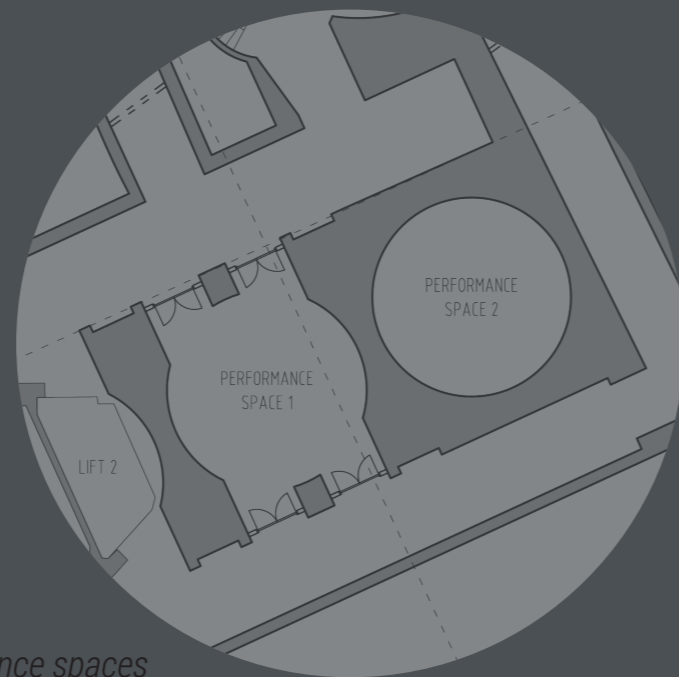




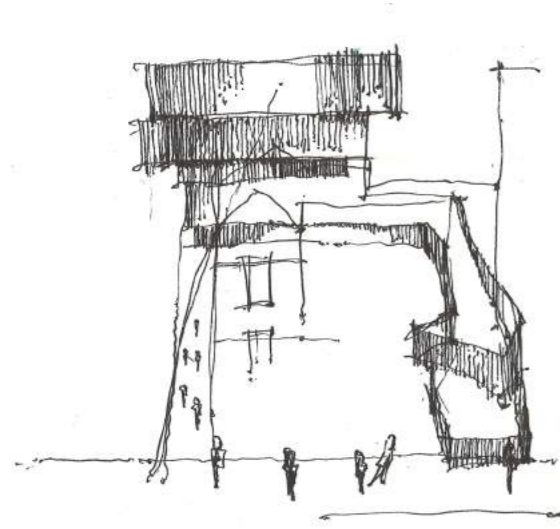
Site plan



Main theatre space



Shaft performance spaces



Concept sketch



Strand elevation



Surrey St. elevation

I Am Home. Product and installation concept

2016

Chair of Spatial Arts and Lighting Design,
Prof. Deubzer
Single project

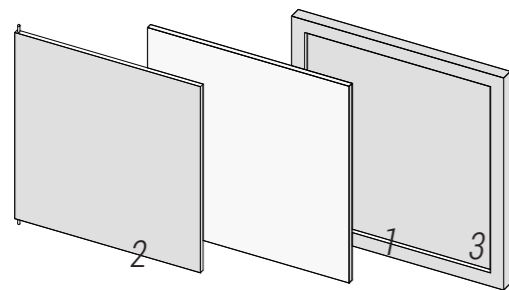
A concept for both an art installation and a product, designed for an ideas competition Osram LIO 2016. The concept has a personal background and explores the idea of home in a modern world. A home is not only defined by space, it consists a lot more of sounds, smells, light. Those intangible qualities create the patterns which make us feel at home. Everyone has a different home, but the patterns are similar. So how can one recreate a pattern and the at-home-feeling?

Light is a unique design tool in the way it fills the space and gives an atmosphere to it. These qualities are used to create the image of a slightly open door, through which a stripe of yellow light is falling into the dark room. Such an image has probably been experienced by most of us in the childhood, with dimmed voices in the background, sounds of tv and barely recognizable shapes of the room. I am home.

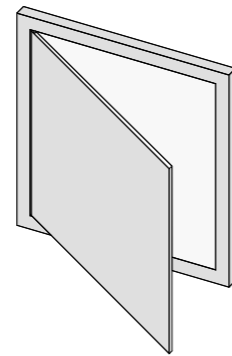


The installation comes closely to depict the light stripe, by showing simply a door in a dark room, which lets light in from the LED-Panel behind it when opened. It is supposed to give a moment of stillness and curiosity, before discovering the light.

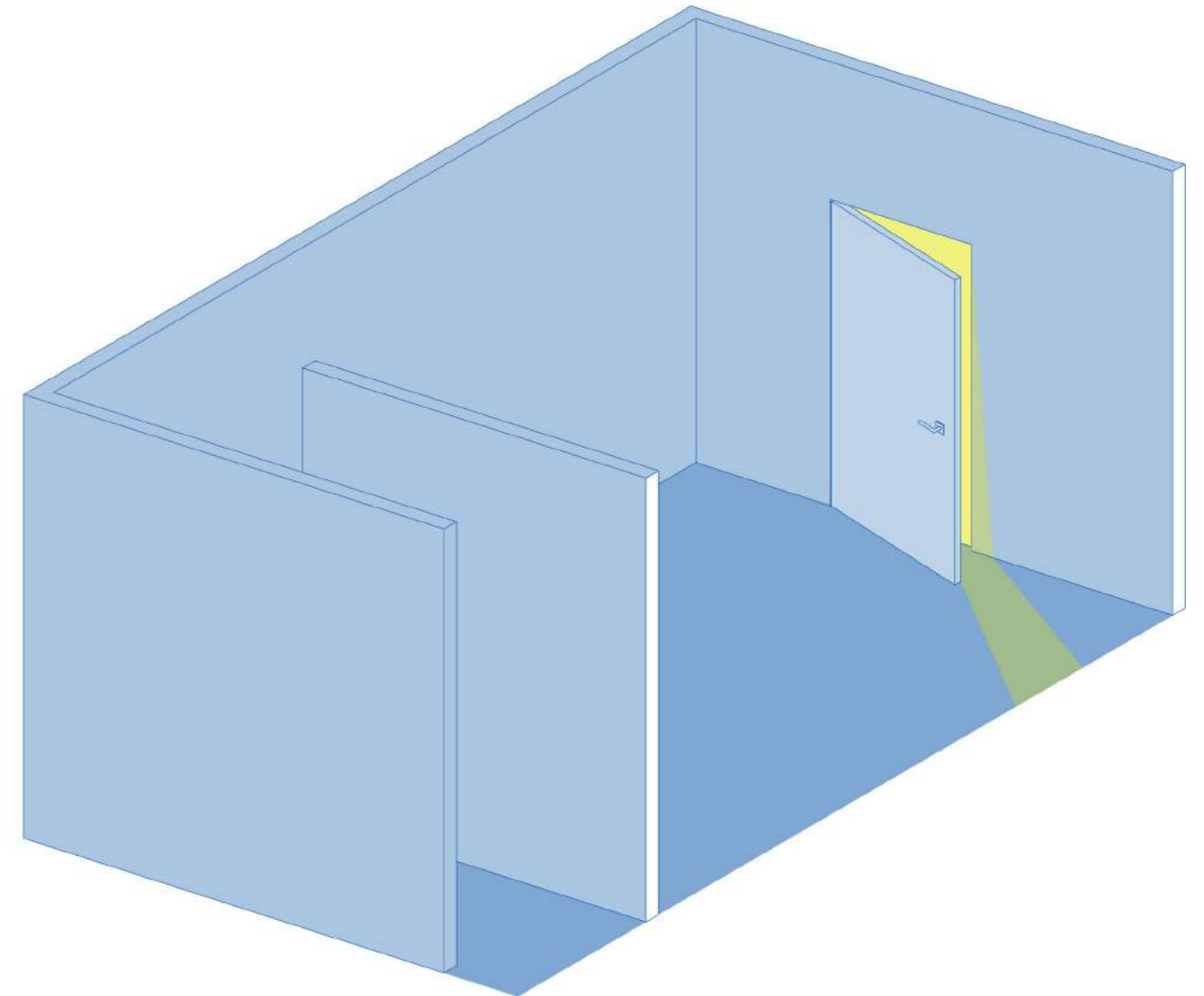
Night lamp construction



- 1 Lid, aluminium
- 2 LED-Panel
- 3 Case, aluminium



The idea of opening the light, instead of turning it on is further explored in the night lamp version of I Am Home. It consists of an aluminium case holding a LED-Panel and equipped with a lid to open and close the light. It is simple in construction and minimalistic in appearance to emit a still, cozy "cloud" of yellow light. It is compact and universal, enabling the home-feeling anywhere.



Installation

Cinémathèque Berlin

2017

Chair of Urban Architecture, Prof. Fink

Bachelor Thesis

Group project (2)

A proposal for the first-ever Cinémathèque in Berlin: a cluster of cinemas, filmschool and Berlinale offices as well as restaurants and cafes under one roof, located in a central part of Berlin in a cultural-quarter-to-be.

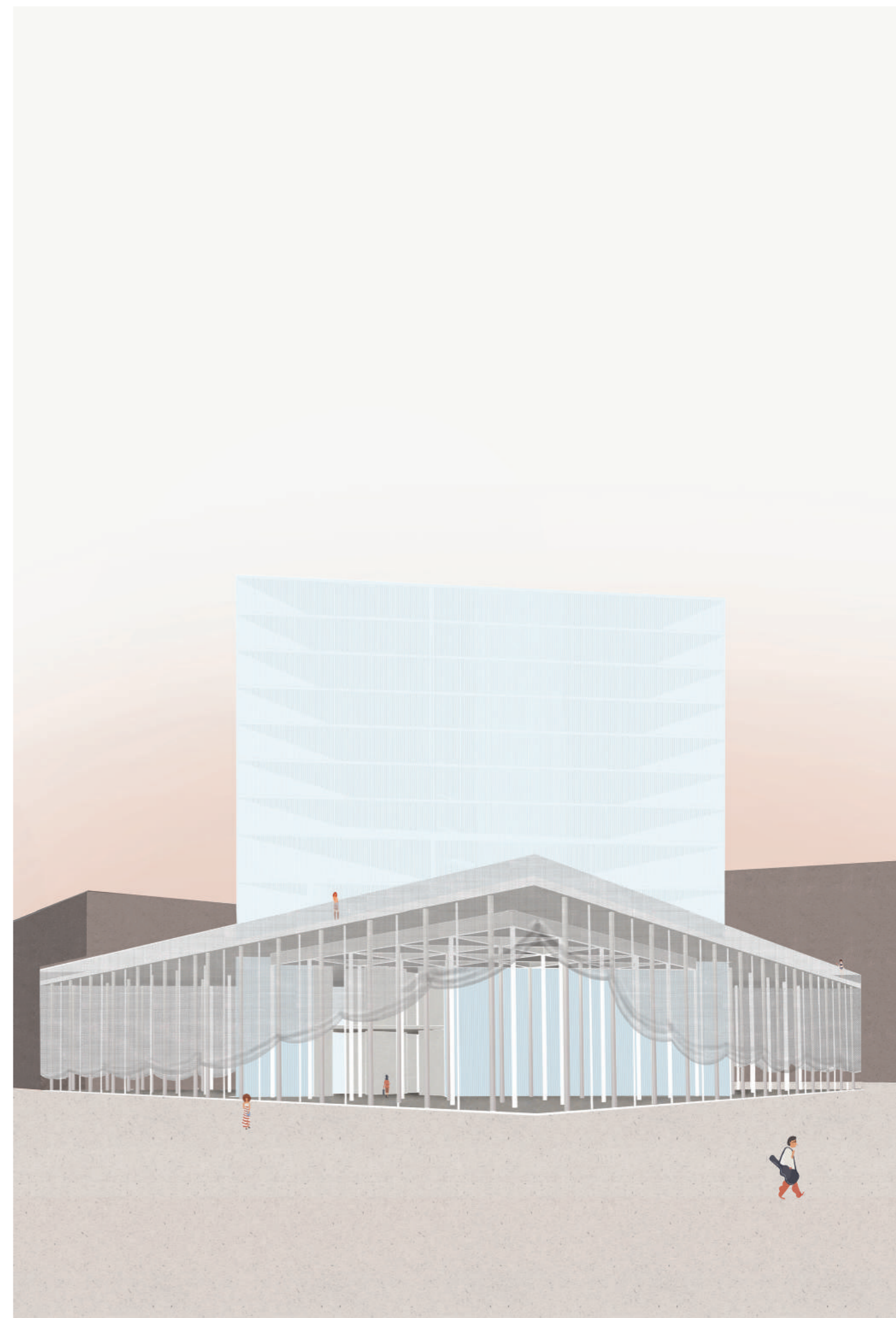
Designed as a sculptural autonomous volume, the Cinémathèque is not trying to adjust to the eclectic surrounding buildings. The ideas of glamour and show which are essential for film are taken as the leading themes of the building. However

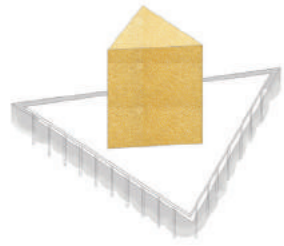
here, a Berlin Glamour is explored - with qualities like sophistication, modesty and festivity embodied in the design. The building creates dramatic spaces inside and outside of it.

Main focus of the project lies in the urban connection to the surrounding and an innovative conception of the floor plans.

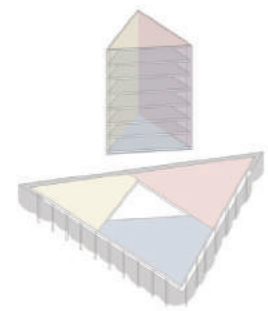


Model and outside perspective, joint work

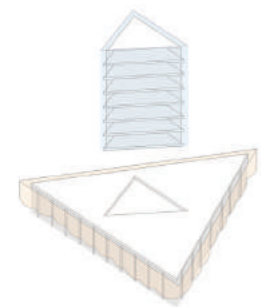




Sculpturally freestanding volume presents Cinematheque as a new landmark for Berlin. Festivity and attraction in appearance.



Generous flexible spaces, serviced by the dense inner tower allow different uses possible at the same time. Inner spaces are adjustable for big- and small-scale events.



Double-facades in both the tower and the flat volume: glass profiles and glass in the tower, metal-mesh curtain and glass in the flat triangle.

Concept sketches



Facade elevation



Inner perspective, joint work



Ground floor plan, joint work



Open terrace floor

Elevation

